



BES

BUILDING ENVELOPE SYSTEMS

PRE-QUALIFICATION DOCUMENT

INDEX

1

About US

03

6

Production Unit

37

2

Our Team

06

7

Health and safety
policy

44

3

Key Persons

08

8

Quality Policy

46

4

Our Projects

18

9

Certificates and
Licenses

49

A modern, two-story white house with large windows and a blue sky background. The house has a minimalist design with large windows and a flat roof. The windows are framed in dark material, and some have white curtains. The house is set on a green lawn with a blue sky and some clouds in the background.

01

ABOUT US

Who We Are

At the forefront of aesthetic minimalism and building efficiency, BES offers a complete range of minimalist system services to improve the quality and efficiency of today's buildings worldwide. We manufacture and deliver high-end minimal aluminium systems that complement architects, developers, project managers, and main contractors by providing them with expert technical input. So whether you're looking for sliding doors and windows or hinge doors and windows, we have you covered and more.

Excellent design and engineering is the corner stone of all good facade companies.

BES offers a complete range of specialist facade services, from design conception through to facade completion. So whether you're looking for a comprehensive facade engineering consultancy, undertake an individual inspection or require a specification report to meet compliance regulations, we can support you.



Why Us ?

BES is committed to staying at the forefront of modern design while unwaveringly prioritizing customer satisfaction. We understand that the world of architectural aesthetics is ever-evolving, and we pride ourselves on continuously adapting to the latest trends and technologies to provide our clients with the most stylish and functional solutions.

Vision

To bring architects vision and client dreams to reality, therefore, we constantly working on developing our products using the latest technologies and material to improve the aesthetic and the performance.

Mission

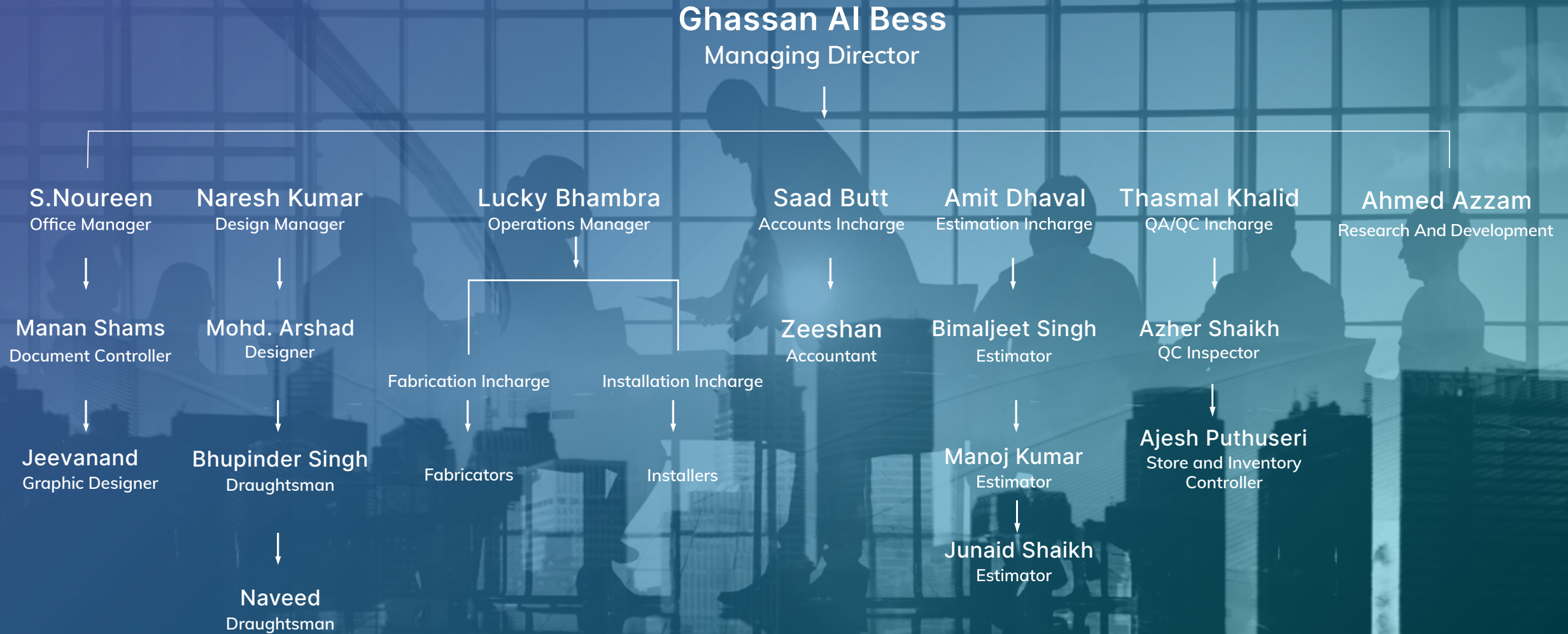
We understand modern life requirement and challenges, therefore we work closely with our collaborates finding bespoke solution to for their projects within reasonable budget without compromising the quality and the performance.

A modern interior space with large, floor-to-ceiling windows. The windows offer a view of an outdoor area with greenery and a building. The image is overlaid with a blue-green gradient. The text '02 | OUR TEAM' is displayed in white on the left side.

02

OUR TEAM

Organization Hierarchy



A person wearing a white dress shirt and a dark, striped tie is seated at a desk, writing on a white document with a dark pen. Their left hand rests on the paper. The image is overlaid with a semi-transparent blue filter.

03

KEY PERSONS



Ghassan Al Bess

MANAGING DIRECTOR

EDUCATION
B.S.C.

NATIONALITY
Jordanian

LANGUAGES
English & Arabic

Results-oriented and visionary Managing Director with extensive experience in the construction industry. Proven track record of successfully leading and growing construction businesses, driving profitability, and delivering exceptional results. Skilled in strategic planning, business development, and building strong client relationships. Adept at managing large-scale projects, overseeing cross-functional teams, and ensuring adherence to quality, safety, and regulatory standards. Exceptional leadership abilities, inspiring teams to achieve excellence and fostering a collaborative and performance-driven culture.

RELEVANT EXPERIENCE

2012 – PRESENT

Managing Director

Building Envelope Systems
Dubai, U.A.E.

- Plans, directs, and coordinates activities of designated project to ensure that goals or objectives of project are accomplished within prescribed time frame and funding parameters by performing the duties personally or through subordinate supervisors.
- Reviews project proposal or plan to determine time frame, funding limitations, procedures for accomplishing project, staffing requirements, and allotment of available resources to various phases of project.
- Establishes work plan and staffing for each phase of project, and arranges for recruitment or assignment of project personnel.
- Confers with project staff to outline work plan and to assign duties, responsibilities, and scope of authority.
- Directs and coordinates activities of project personnel to ensure project progresses on schedule and within prescribed budget.
- Reviews status reports prepared by project personnel and modifies schedules or plans as required.
- Confers with project personnel to provide technical advice and to resolve problems.

2005 - 2012

Technical & Commercial Director

Multiforms L.L.C
Dubai, U.A.E.

- Manage, monitor & coordinate the technical operations.
- Provide technical direction for the development, design & system integration of products.
- Control and review the works of design teams, recognizing product deficiencies and implementing effective solutions.
- Liaison with Clients, Main Contractors, and other departments to identify needs and evaluating alternative technical solutions
- Responsible for all Commercial aspects of the business. This includes marketing, calling on consultants and contractors, tender designing, managing the estimating / tender office.
- Negotiating competitive prices from suppliers, budgeting as well as concluding final negotiations on projects.
- Interact with planning department to ensure continual flow of projects to suit established budgets.
- Provide the management with actual sales figure compared to budget.

2004 - 2005

Project Manager

Aluglass Company
Doha, Qatar

- Managing day to day operational aspects of the project.
- Creates and executes project work plans and revises as appropriate to meet the changing needs and requirements.
- Identify resources needed and assigns individual responsibilities.
- Analyzes project profitability, revenue, margins, bill rates and utilization.

2002 - 2004

Structural Engineer

Petra Aluminium
Amman, Jordan

- Check and investigate structural integrity of curtain wall in coordination with actual site condition and consultant intent. Involve in doing system / concept design and checking calculations made by design sub-contractor.
- Responsible in preparing of system design, drawings and calculations for tender project.

2000 - 2002

Project Engineer

Al Muhaidib Metal Industries
Riyadh, KSA

- Implementation and supervising for installation of Aluminum Frames and Glazing for Doors, Windows, Curtain Wall, Aluminum Cladding.
- Coordinate the checking of designs, plans specification and for the works items.
- Monitoring and updating daily progress.
- Responsible for the daily and weekly updating, recording and file keeping of WIR and NCR register.
- Reviews attachments of WIR and NCR prior to submission to Supervising Consultant for closure.
- Conducts joint visual inspection with Supervising Consultant, Project Management and Main contractor QC Representative for final closure of WIR and NCR.
- Delegates Inspection Requests to QC Engineers and Inspectors to ensure that all scheduled inspections are attended.
- Prepares daily and weekly report of Material and Work Inspections including encountered problems for immediate closure and rectifications



Lucky Bhabra

OPERATIONS MANAGER

EDUCATION
B.A

NATIONALITY
Indian

LANGUAGES
English, Hindi & Punjabi

Experienced and results-driven construction operations manager with a proven track record of successfully overseeing complex projects from inception to completion. Diligent in optimizing resources, managing budgets, and ensuring strict adherence to timelines and quality standards. Skilled in liaising with clients, stakeholders, and cross-functional teams to drive project success. Exceptional leadership abilities, adept at motivating and mentoring teams to deliver exceptional performance. Strong problem-solving skills and a commitment to continuous process improvement.

RELEVANT EXPERIENCE

2017 – PRESENT

Operations Manager

Building Envelope Systems

Dubai, U.A.E.

- Responsible for developing project plans, including timelines, resource allocation, and budgeting. You oversee the execution of construction projects, ensuring they are completed on time, within budget, and according to quality standards. In charge of managing and coordinating the construction team, including contractors, subcontractors, and other personnel. This involves hiring, training, and supervising workers, assigning tasks, and ensuring the team's productivity and efficiency.
- Oversee the allocation and utilization of resources, such as equipment, materials, and manpower, to ensure their efficient use throughout the project. This includes monitoring resource availability, coordinating deliveries, and managing inventory.
- Ensure that construction activities comply with safety regulations, building codes, and quality standards. Implement quality control measures, conduct inspections, and address any non-compliance issues. Safety of the workers and adherence to safety protocols are of paramount importance.
- Work closely with the project team to control costs, negotiate contracts, and handle any financial issues that may arise during the construction process.
- Act as a liaison between different stakeholders, including clients, architects, engineers. Maintain regular communication to address concerns, provide project updates, and ensure smooth collaboration and coordination.
- Proactively identify potential risks, develop risk mitigation strategies, and implement contingency plans to address unforeseen circumstances. Solve problems that arise during construction, making decisions to keep the project on track.
- Provide regular updates to management and stakeholders regarding project status, milestones achieved, and any deviations from the original plan.
- Improve construction processes, productivity, and overall project delivery. Involve adopting new technologies, implementing best practices.

2010 - 2017

Project Engineer

Al Ain Cement And Marble Co LLC.

Alain, U.A.E

- Studying and reviewing project architectural drawings, specifications, B.O.Q., contract and all relevant documents in order to build up the general and preliminary understanding of the project requirements.
- Identifying the project components in terms of materials, manpower and program of works.
- Preparing program of works and manpower histogram in coordination with other departments based on the baseline program received from main contractor.
- To coordinate with all persons involved in the project such as client representative, main contractor and consultant and to discuss all technical issues to achieve the project requirements.



Naresh Kumar

DESIGN MANAGER

EDUCATION
B.com

NATIONALITY
Indian

LANGUAGES
English, Hindi & Punjabi

An energetic and self-motivated Design Manager who can develop and deliver design projects that will help shape a business for years to come. Holding experience of working on complex projects for both public and private sector clients. In the current role he is able to maintain the confidence and enthusiasm of colleagues across the company by providing them with the optimum level of leadership, guidance and 'hands on' support. Through his work and career he has learnt how to adapt his leadership approach to get the very best out of individuals and organizations.

RELEVANT EXPERIENCE

2018 – PRESENT

Design Manager

Building Envelope Systems
Dubai, U.A.E.

- Creating a design brief based on the client's needs and desired end result.
- Ensuring that designs meet client specifications, industry standards, and other requirements.
- Managing other designers to ensure that projects are completed in a timely manner.
- Managing client relationships and serving as a liaison between designers and clients.
- Providing feedback on design ideas to improve them or identifying problems with them that need to be resolved.
- Assigning tasks to designers based on their skill sets and ensuring that they are completed satisfactorily.
- Supervising the production of physical prototypes or mockups of products or services.
- Establishing and maintaining design standards for company use.
- Reviewing designs for accuracy and appropriateness, identifying problems with them, and suggesting changes.

2017 - 2018

Designer

Elite Marble & Granite LLC.
Dubai, U.A.E.

- To develop the contract drawings as shop drawing and details for approval from consultant as per architect's instructions.
- Prepare Shop Drawings for Stone Flooring, Cladding and External Façade.
- Design Fixing System for External Façade as per Technical Directors instructions.
- Review the BOQ and detailed drawings and measure using standardized rules.
- Review conditions of contract, drawings and specifications.
- Measurement and valuation of installations. Checking and verifying quantities.
- Prepare, schedule, coordinate and monitor the assigned engineering project.
- Cooperate and communicate effectively with project manager and other project participants.
- Co-ordination with Architects and consultants.
- Works independently under direction of Project Manager & Technical Director.
- Take Measurement as per site condition to prepare Production Order.

2017 - 2017

Designer

Dhiman Aluminium
India

- Reporting to the design team leader.
- Study and develop concept & Interface details under guidance of Design Team Leader.
- Implementation of 3D model drawings for all kind of windows & doors.
- Develop shop drawings, release of material order & fabrication drawings and maintaining documents.
- Report Design Team Leader to manage a job & all activities of design process.
- Checking & Taking measurements on site for preparing as-built drawings to handover to client.
- Design various drawings and associate documents coordinate with managers and specialists plan production and analyze all samples for site works.
- Evaluate all designs of vendors and make appropriate recommendation to site engineer.
- Assist to prepare project plans and associate design sheets and always provides technical support to Site staff.
- Involve in technical clarifications as required.

S.Noureen Jawed

OFFICE MANAGER

EDUCATION
B.B.A

NATIONALITY
Pakistan

LANGUAGES
English, Hindi & Urdu

Highly accomplished Office Manager with extensive experience in overseeing administrative operations within the construction industry. Demonstrated expertise in project coordination, budget management, and team leadership. Strong proficiency in managing multiple projects simultaneously while ensuring adherence to deadlines and quality standards. Excellent interpersonal skills, adept at fostering collaborative relationships with clients, contractors, and stakeholders. Skilled in implementing and optimizing office procedures, systems, and technologies to maximize productivity. Committed to delivering exceptional results through effective communication, strategic planning, and meticulous attention to detail.

RELEVANT EXPERIENCE

2012 – PRESENT

Office Manager

Building Envelope Systems
Dubai, U.A.E.

- Oversee and manage all administrative functions within the construction office, including document control, correspondence, record-keeping, and filing systems. Ensure smooth day-to-day operations of the office.
- Coordinate and facilitate project activities, including scheduling, resource allocation, and communication between project teams, contractors, and clients. Track project progress and update stakeholders accordingly.
- Develop and manage project budgets, including cost estimation, tracking expenses, and controlling costs. Collaborate with the finance department to ensure accurate financial reporting and adherence to budgetary constraints.
- Review and negotiate contracts with vendors, suppliers, and subcontractors. Ensure compliance with contract terms and conditions, including insurance requirements, payment schedules, and deliverables.
- Lead and supervise a team of administrative staff, providing guidance, training, and performance evaluations. Foster a positive work environment and promote teamwork and collaboration.
- Implement and maintain efficient office procedures, systems, and technologies to streamline operations and enhance productivity. Evaluate and recommend improvements to optimize workflow and enhance efficiency.
- Ensure compliance with relevant regulations, permits, and licenses. Stay updated with industry standards and changes in regulations to ensure adherence and mitigate risks.
- Serve as a liaison between clients, contractors, and internal teams. Facilitate effective communication, manage expectations, and address any issues or concerns that may arise during the project lifecycle.
- Implement and enforce quality control measures to ensure projects meet or exceed industry standards and client requirements.

2007 - 2012

ProjectCo-ordinator

Multiforms LLC.
Dubai, U.A.E

- Collaborate with project managers to develop project plans, including defining objectives, scope, timelines, and resources required. Coordinate project kick-off meetings and ensure all stakeholders are aligned on project goals.
- Create and maintain project documentation, such as contracts, permits, progress reports, and change orders.. Prepare regular project status updates and communicate them to the project team and management.
- Coordinate and schedule equipment, and materials to ensure timely project execution. Liaise with subcontractors, suppliers, and vendors to obtain quotes, negotiate contracts, and monitor their performance. Maintain a comprehensive database of project resources.
- Serve as a central point of contact for all project-related communications. Facilitate effective communication among project stakeholders, including clients, architects, engineers, contractors, and regulatory authorities. Conduct regular project
- Implement and monitor quality control procedures to ensure adherence to project specifications, standards, and regulations.
- Manage project changes, including assessing their impact on schedule, and scope. Document change requests, evaluate alternatives, and coordinate approvals. Ensure proper implementation of approved changes while minimizing disruptions.
- Identify and assess potential risks and develop mitigation strategies. Monitor project risks throughout the construction process and proactively address issues that may arise. Ensure compliance with safety regulations and promote a safe working environment.
- Track contract deliverables, payments, and warranties. Manage contract variations and claims in collaboration with the project team.
- Foster positive relationships with project stakeholders and maintain regular communication to manage expectations. Address any concerns or conflicts that may arise during the project. Seek feedback from clients and implement necessary improvements based on lessons learned.

04

OUR PRODUCTS



VetroPivot

VP 75 / VP 75P

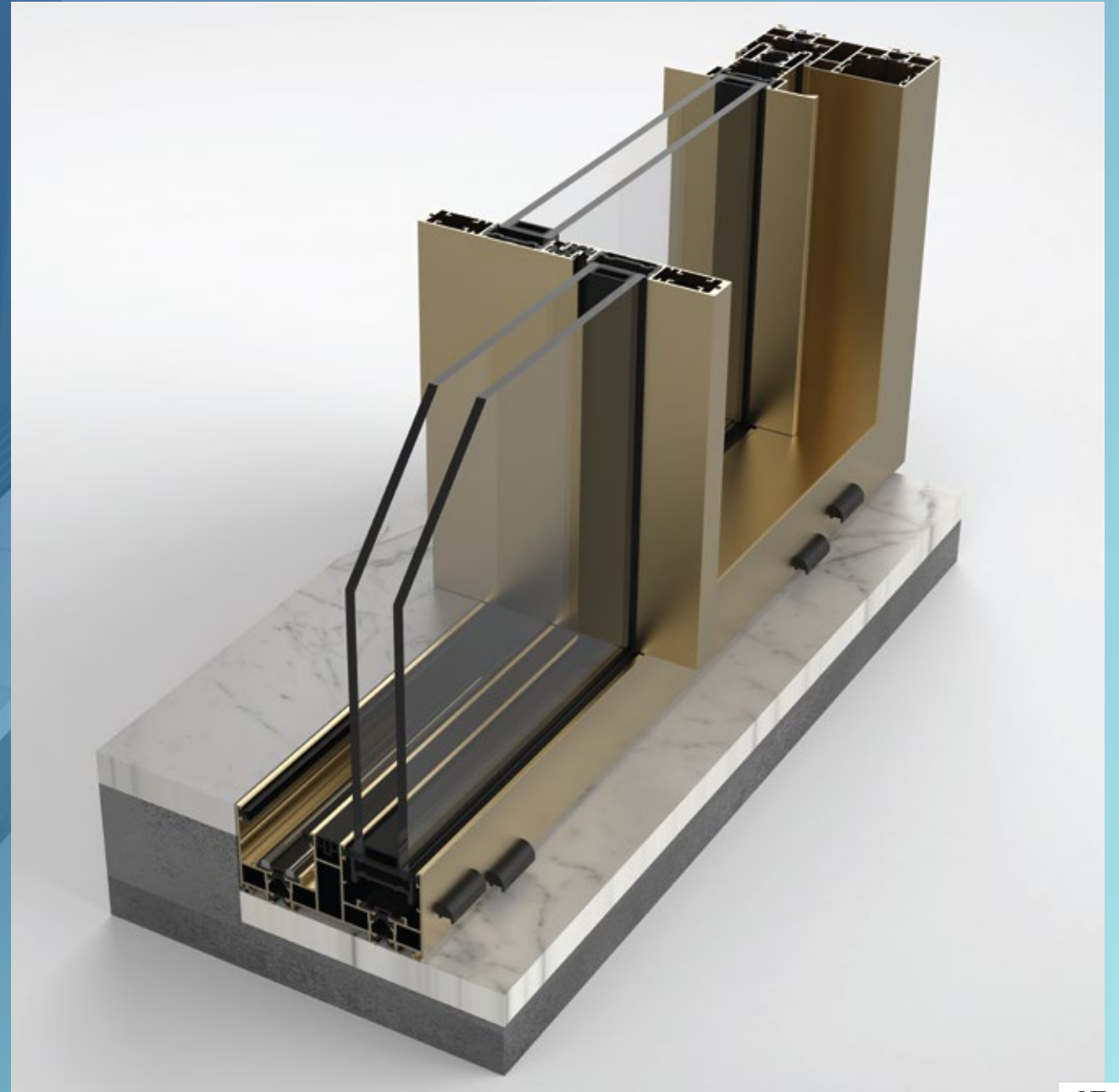
Discover the seamless elegance of VetroPivot, an extraordinary system crafted by Vetromax to redefine the concept of doors. VetroPivot boasts a harmonious blend of minimalist design and flawless engineering. Every detail is meticulously crafted to ensure effortless motion and a touch of architectural brilliance. With a simple pivot, your door glides open or closes gracefully, creating a captivating focal point that enhances any interior or exterior space.



VetroSlide

VS 34 / VS 44

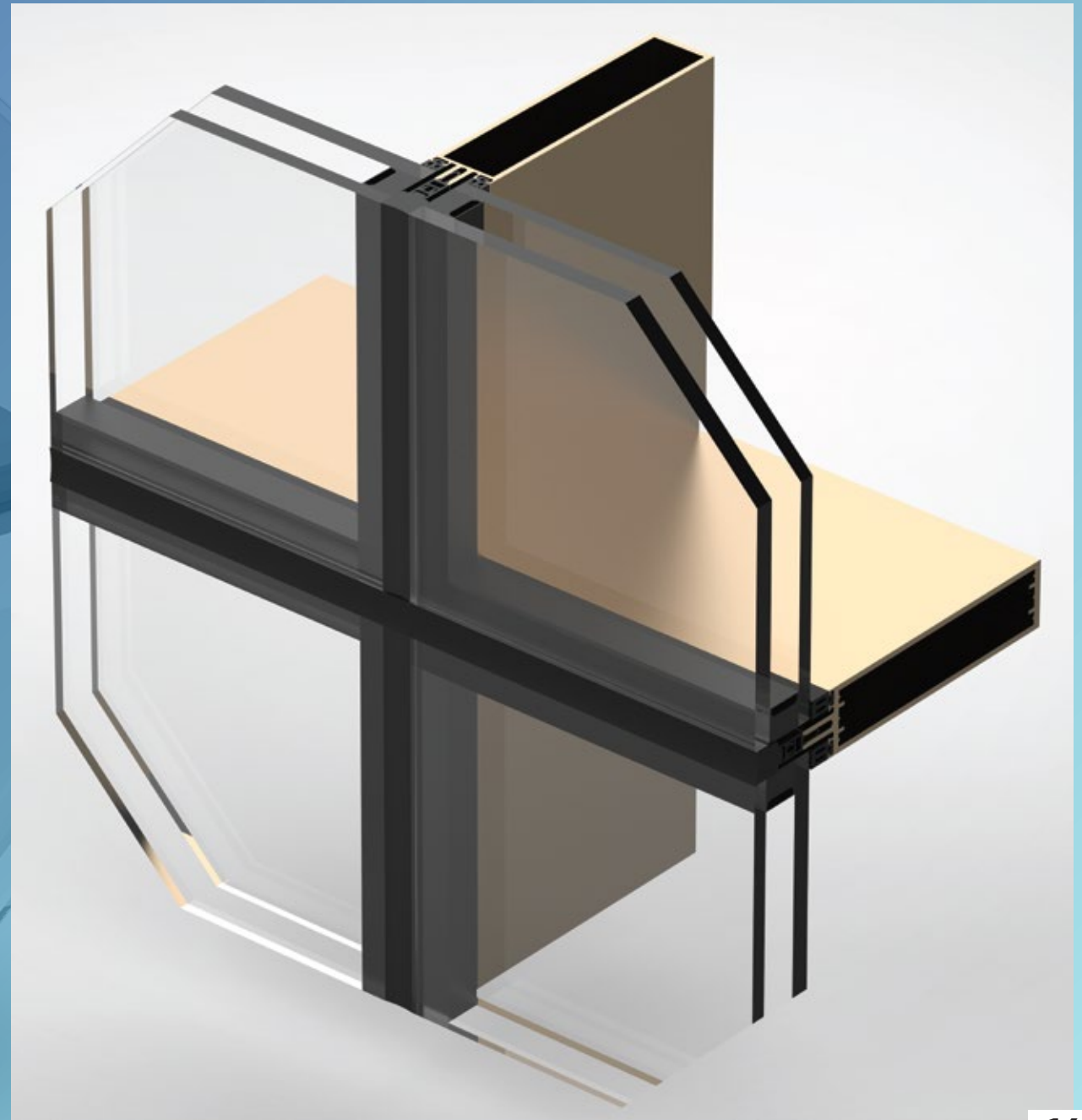
VetroSlide, our meticulously designed minimal sliding system. Engineered to provide maximum glass panels while utilizing minimal yet durable aluminium profiles, this system is crafted using the latest materials and technologies, making it ideal for luxurious projects. With a focus on elegance and functionality, VetroSlide offers the option of manual or motorized operation, ensuring extra comfort and convenience. Experience a seamless blend of style and innovation with VetroSlide, the perfect choice for those seeking a sophisticated sliding system for their architectural masterpiece.



VetroFacade

CW 35C / CW 35SG

Introducing VertoFacade, our cutting-edge minimal curtain wall system. Featuring slim aluminium mullions and transoms with a width of 35 mm and varying depths, this system is meticulously designed to accommodate different glass panels and withstand varying wind loads. We offer the flexibility of providing the system in two configurations: conventional curtain wall with cover caps vertically and horizontally, or structural curtain wall with silicone joints vertically and horizontally. Additionally, we can supply a hybrid solution, combining both conventional and structural elements to meet your specific project requirements.



VetroCasement

HS 80 / HS 80P

VetroCasement is a versatile aluminum system that provides a range of options for windows and doors. It offers a minimalistic design and can accommodate various types of window openings, including fixed windows, side-hung windows, bottom-hung windows, and tilt and turn windows. Additionally, the system can be used to create both single-leaf and double-leaf doors.



The background is a deep blue gradient. Overlaid on this is a complex, glowing network of white and light blue lines and nodes. The nodes are represented by small circles of varying sizes, some of which are highlighted with a bright blue glow. The lines connect these nodes in a web-like pattern, creating a sense of interconnectedness and data flow. The overall aesthetic is futuristic and technological.

05

Our
Projects
& Clients

Our Clients

BES distinguishes itself from other suppliers through its unique approach, specializing in the supply of aluminum system materials and offering additional fabrication services. The company's core focus lies in fostering collaborative partnerships with contractors, architects, and owners. By actively engaging in the design and engineering phases, assuming a leadership role in planning and scheduling, influencing product selection in a positive manner, and prioritizing cost-effectiveness and safety, BES establishes itself as a trusted and dependable partner.

One of the key factors that differentiate BES is its commitment to delivering projects on time, with an unwavering guarantee of reliability. Through meticulous planning and implementation, the company ensures fail-proof assurance, enabling clients to rely on BES for timely completion of their projects.



Projects

Project Name	Project Location	Scope of Work	System Used
Shaikh Zayed School	Abu Dhabi, UAE	System Supply	VMS 36 (Minimal Sliding Door) VF CW 35 (Curtain Wall) VP 75 (Pivot Door)
Precision Football Academy	Dubai, UAE	System Supply	VMS 36 (Minimal Sliding Door HR) VF CW 35 (Curtain Wall)
Vida Dubai Mall	Dubai, UAE	Design, Engineering, Supply & Installation	VMS G (Vertical Sliding Door)
Frond L	Palm Jumeriah, Dubai, UAE	Design, Engineering, Supply & Installation	VMS G (Vertical Sliding Door) HS 80 (Minimal Hinge Door & Casement Window) VMS 36M (Minimal Sliding Door HR Motorized) VP 75 (Pivot Door) VF CW 35 (Curtain Wall) VMS 36 (Minimal Sliding Door HR) VF CW 35SG (Sky Light)
Frond M	Palm Jumeriah, Dubai, UAE	Design, Engineering, Supply & Installation	HS 80 (Minimal Hinge Door & Casement Window) VF CW 35 (Curtain Wall) VMS 36 (Minimal Sliding Door HR) --- (Cantiliver Glass Balustrade)

Project Name	Project Location	Scope of Work	System Used
Frond E	Palm Jumeriah, Dubai, UAE	Design, Engineering, Supply & Installation	VMS 36 (Minimal Sliding Door HR) VF CW 35 (Curtain Wall)
Jumeriah Gate Building	Dubai, UAE	Design, Engineering, Supply & Installation	VMS 54 (Minimal Sliding Door HR)
Private Villa, Wadi Al Safa, Al Barari	Dubai, UAE	Design, Engineering, Supply & Installation	VF CW 35INS (Top Hung Window) VF CW 35 (Curtain Wall) VMS 36 (Minimal Sliding Door HR)
Private Villa, Al Safa	Dubai, UAE	Design, Engineering, Supply & Installation	VF CW 35INS (Top Hung Window) VF CW 35 (Curtain Wall) VP 75 (Pivot Door) VMS 36 (Minimal Sliding Door HR)
Cheval Blanc Randheli Resort & Spa	Maldives	Design, Engineering, Supply & Installation	VMS 36 (Minimal Sliding Door)
Private Villa, Vipingo Ridge	Kenya	Design, Engineering, Supply & Installation	VMS 36 (Minimal Sliding Door HR) VP 75 (Pivot Door)
Private Villa, Nyali Beach	Kenya	Design, Engineering, Supply & Installation	VMS 36 (Minimal Sliding Door HR) VP 75 (Pivot Door)

Project Name	Project Location	Scope of Work	System Used
Private Villa	Vietnam	Design, Engineering & Supply	VMS 36 (Minimal Sliding Door) VF CW 35 (Curtain Wall)
Private Villa	Qatar	Design, Engineering, Supply & Installation Supervision	HS 80 (Minimal Hinge Door & Casement Window) VF CW 35 (Curtain Wall) VP 75 (Pivot Door) VMS 36 (Minimal Sliding Door)

BES

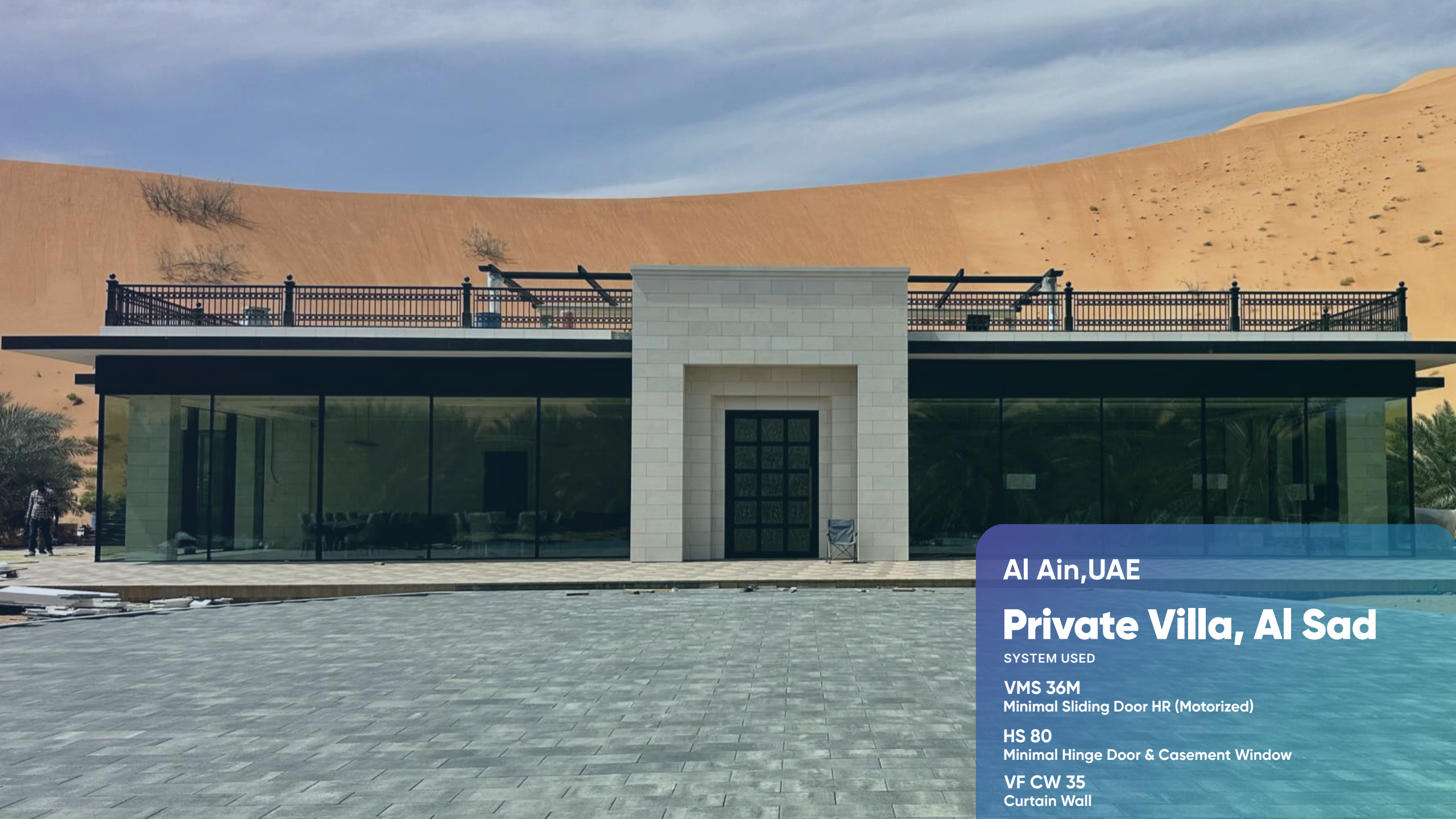
BUILDING ENVELOPE SYSTEMS



Dubai,UAE

Sustainability Pavilion

The Design/Engineering; Procurement & Fabrication of Aluminium & Steel Work for PV Modules for the main Canopy & E-Trees and Reflector Glass
Sustainability Pavilion, Expo2020, Dubai.



Al Ain, UAE

Private Villa, Al Sad

SYSTEM USED

VMS 36M

Minimal Sliding Door HR (Motorized)

HS 80

Minimal Hinge Door & Casement Window

VF CW 35

Curtain Wall



Al Ain, UAE

Private Gazebo, Al Sad

SYSTEM USED

VMS 36M

Minimal Sliding Door HR (Motorized)

VF CW 35

Curtain Wall



Nareel Island, Abu Dhabi, UAE

Private Villa

SYSTEM USED

VMS 36
Minimal Sliding Door HR

VF CW 35
Curtain Wall

VP 75
Pivot Door

VF CW 35SG
Sky Light

VMS 36M
Minimal Sliding Door HR (Motorized)

VMS 54M
Minimal Sliding Door HR (Motorized)



Palm Jumeriah Dubai,UAE

Frond L Villa

SYSTEM USED

VMS 36
Minimal Sliding Door HR

VF CW 35
Curtain Wall

VP 75
Pivot Door

VMS G
Vertical Sliding Door

VF CW 35SG
Sky Light

VMS 36M
Minimal Sliding Door HR (Motorized)

VMS 54M
Minimal Sliding Door HR (Motorized)

HS 80
Minimal Hinge Door &
Casement Window



Palm Jumeriah Dubai,UAE

FronD M Villa

SYSTEM USED

VMS 36
Minimal Sliding Door HR

VF CW 35
Curtain Wall
HS 80
Minimal Hinge Door & Casement Window



Palm Jumeriah Dubai,UAE

Fronde Villa

SYSTEM USED

VMS 36
Minimal Sliding Door HR

VF CW 35
Curtain Wall



Dubai, UAE

Jumeriah Gate Building

SYSTEM USED

VMS 54
Minimal Sliding Door HR



Dubai, UAE

Private Villa, Al Safa

SYSTEM USED

VMS 36
Minimal Sliding Door HR

VF CW 35
Curtain Wall

VF CW 35INS
Top Hung Window

VP 75
Pivot Door



Maldives

Cheval Blanc Randheli Resort & Spa

SYSTEM USED

VMS 36
Minimal Sliding Door



Mombasa, Kenya

Private Villa, Nyali Beach

SYSTEM USED

VMS 36M
Minimal Sliding Door

VP 75
Pivot Door



Vietnam Private Villa

SYSTEM USED

VMS 36M
Minimal Sliding Door

VF CW 35
Curtain Wall



Qatar

Private Villa

SYSTEM USED

VMS 36
Minimal Sliding Door

VP 75
Pivot Door

VMS 36
Minimal Sliding Door

HS 80
Casement Window & Door



Mombasa, Kenya

Private Villa, Vipingo Ridge

SYSTEM USED

VMS 36M
Minimal Sliding Door

VP 75
Pivot Door

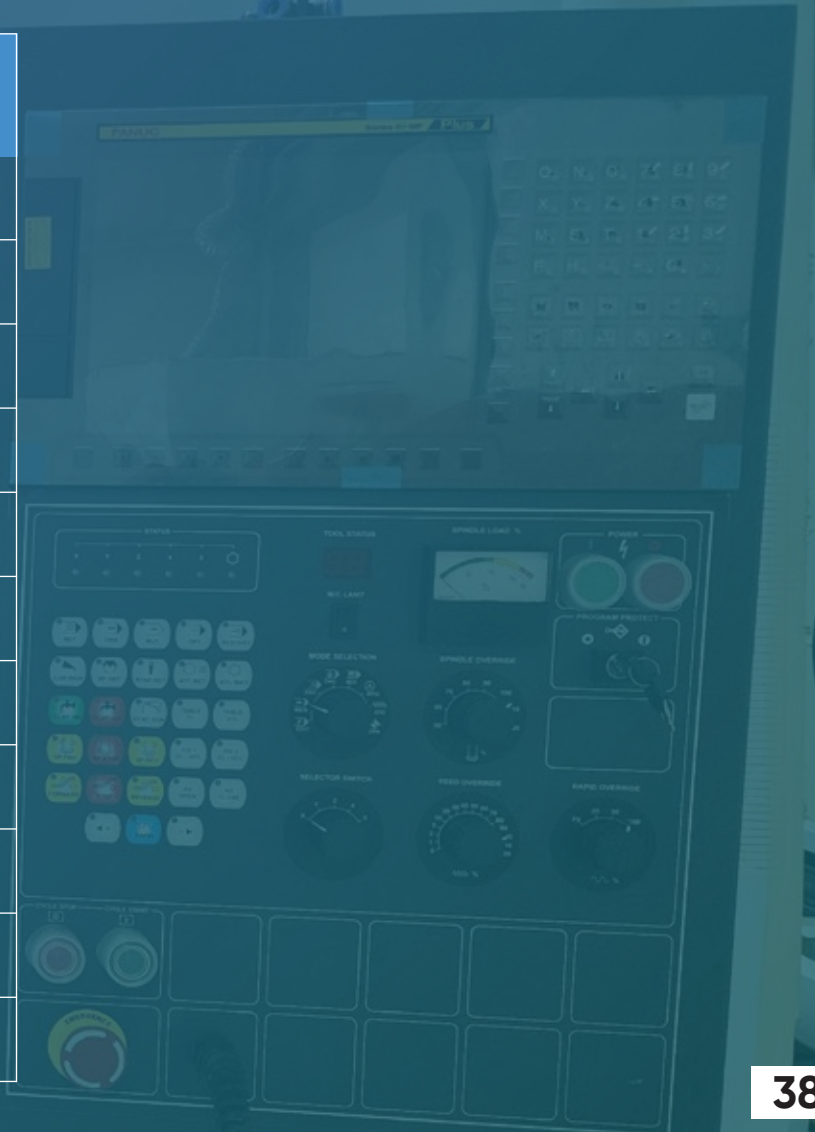


06

Production & Manufacturing Division

Machinery Details

MACHINERY DETAILS	QTY
4 Axis Vertical CNC Machine	1
Vertical CNC Machine	1
Double Head Cutting Saw Machine	1
Double Head Notching machine	1
Profile Kurling Machine	1
Profile Crimping Machine	1
CNC Copy Router Machine	1
Heavy Duty Drill Machine	1
Single Head High Eficent Cuting Saw	1
Air Compressor	1
Welding Machine	1



4 Axis Vertical CNC Machine



Vertical CNC Machine



Double Head Cutting Saw Machine



Double Head Notching Machine



Profile Kurling Machine



Profile Crimping Machine



CNC Copy Router Machine



Heavy Duty Drill Machine



Assembly & Storage Area





07

Quality, Health, Safety
& Environment policy



At BES, we maintain an unwavering commitment to our core values. We strive to accurately discern the needs of our customers and deliver high-quality services in a timely and cost-effective manner. We place a strong emphasis on continuous improvement in the areas of Quality, Safety, Health & Environment, utilizing a management-by-objectives approach.

It is our belief that the most effective results are achieved through preventative measures, and as such, we take responsibility for providing a safe and healthy work environment that fosters optimal employee performance and enables personal and professional growth. Additionally, we are dedicated to complying with all relevant environmental, health, safety, legal, and other statutory regulations. Finally, we believe that it is essential for all stakeholders to fully comprehend our Quality, Health, Safety, and Environment requirements, and that our standards should align with international norms.

08

Quality policy



Inspection Flow Chart

The company's quality policy is fundamentally centered on achieving the highest level of customer satisfaction.

To this end, we source raw materials of the highest quality from the most dependable sources, perform quality checks at every stage of fabrication and installation, and conduct a final inspection to ensure the entire structure is free of defects. Any errors that may arise are promptly identified and rectified to guarantee optimal quality standards.



A person wearing a dark suit and a watch is using a wooden-handled seal to stamp a document. The document is white with some text and a signature. The background is a blurred office setting with a wooden desk.

09

Our Certifications & Licenses

Certifications

Certificate of Registration

This is to certify that Occupational Health & Safety Management System of

BUILDING ENVELOPE SYSTEMS MANUFACTURER L.L.C

Warehouse no. 12, Plot No. 598-1167, Dubai Investment Park 1, Dubai, UAE

is in accordance with the requirements of the following standard

ISO 45001:2018
(Occupational Health & Safety Management System)

SCOPE

TRADING OF BUILDING & CONSTRUCTION MATERIALS, ALUMINIUM SYSTEMS, BUILDING METAL PRODUCTS, TILES & FLOORING MATERIALS, GLASS & MIRRORS MARBLE & NATURAL STONES, WOODEN PRODUCTS AND WINDOWS

Certificate Number : SCK/03/BES/22/97/3526

Initial Registration Date : 08-Dec-2022
1st Surveillance Date : 08-Nov-2023
2nd Surveillance Date : 08-Nov-2024
Certificate Expiry Date : 07-Dec-2025

To verify certificate, visit at :
www.sckcerts.com
www.iafcertsearch.org

Issued by SCK Certifications Pvt. Ltd.

Director

Accreditation Board : 3080, Saturn Street, Suite 100, Brea, California 92821-1732, USA

This certificate remains the property of SCK and must be returned to SCK on Cancellation or Suspension of the certificate Validity of the certificate is subject to successful completion of surveillance audits. Further clarification regarding the scope of this certificate and the applicability of standard may be obtained by consulting the Organisation on info@sckcerts.com

Certificate of Registration

This is to certify that Environmental Management System of

BUILDING ENVELOPE SYSTEMS MANUFACTURER L.L.C

Warehouse no. 12, Plot No. 598-1167, Dubai Investment Park 1, Dubai, UAE

is in accordance with the requirements of the following standard

ISO 14001:2015
(Environmental Management System)

SCOPE

TRADING OF BUILDING & CONSTRUCTION MATERIALS, ALUMINIUM SYSTEMS, BUILDING METAL PRODUCTS, TILES & FLOORING MATERIALS, GLASS & MIRRORS MARBLE & NATURAL STONES, WOODEN PRODUCTS AND WINDOWS

Certificate Number : SCK/02/BES/22/97/3525

Initial Registration Date : 08-Dec-2022
1st Surveillance Date : 08-Nov-2023
2nd Surveillance Date : 08-Nov-2024
Certificate Expiry Date : 07-Dec-2025

To verify certificate, visit at :
www.sckcerts.com
www.iafcertsearch.org

Issued by SCK Certifications Pvt. Ltd.

Director

Accreditation Board : 3080, Saturn Street, Suite 100, Brea, California 92821-1732, USA

This certificate remains the property of SCK and must be returned to SCK on Cancellation or Suspension of the certificate Validity of the certificate is subject to successful completion of surveillance audits. Further clarification regarding the scope of this certificate and the applicability of standard may be obtained by consulting the Organisation on info@sckcerts.com

Certificate of Registration

This is to certify that Quality Management System of

BUILDING ENVELOPE SYSTEMS MANUFACTURER L.L.C

Warehouse no. 12, Plot No. 598-1167, Dubai Investment Park 1, Dubai, UAE

is in accordance with the requirements of the following standard

ISO 9001:2015
(Quality Management System)

SCOPE

TRADING OF BUILDING & CONSTRUCTION MATERIALS, ALUMINIUM SYSTEMS, BUILDING METAL PRODUCTS, TILES & FLOORING MATERIALS, GLASS & MIRRORS MARBLE & NATURAL STONES, WOODEN PRODUCTS AND WINDOWS

Certificate Number : SCK/01/BES/22/97/3524

Initial Registration Date : 08-Dec-2022
1st Surveillance Date : 08-Nov-2023
2nd Surveillance Date : 08-Nov-2024
Certificate Expiry Date : 07-Dec-2025

To verify certificate, visit at :
www.sckcerts.com
www.iafcertsearch.org

Issued by SCK Certifications Pvt. Ltd.

Director

Accreditation Board : 3080, Saturn Street, Suite 100, Brea, California 92821-1732, USA

This certificate remains the property of SCK and must be returned to SCK on Cancellation or Suspension of the certificate Validity of the certificate is subject to successful completion of surveillance audits. Further clarification regarding the scope of this certificate and the applicability of standard may be obtained by consulting the Organisation on info@sckcerts.com

Certifications



رخصة صناعية
Industrial License

رقم الرخصة
883063

اسم الشركة
مصنع بانيغ أنفروب سيستمز د.م.م

الاسم التجاري
مصنع بانيغ أنفروب سيستمز د.م.م

Trade Name
BUILDING ENVELOPE SYSTEMS MANUFACTURER L.L.C

Legal Type
Limited Liability Company - Single Owner(LLC - SO)

Expiry Date
08/03/2024

D&B D-U-N-S
0

Register No.
1879605

الشكل القانوني
شركة ذات مسؤولية محدودة - الشخص الواحد (ذ.م.م)

Issue Date
08/03/2020

Main License No.
883063

DDCI No.
337280

تاريخ الإصدار
08/03/2020

رقم الترخيص
883063

رقم السجل التجاري
1879605

الأفراد / License Members

Share / المصص	Role / الصفة	Nationality / الجنسية	Name / الاسم	No./ رقم الشخص
100.00%	Shares Owner / مخصص	Jordan / الأردن	غسان رشاد إبراهيم بيس	807878
	Manager / مدير	Jordan / الأردن	غسان رشاد إبراهيم بيس	807878

نشاط الرخصة التجارية / License Activities

صناعة الاتعمال المعدنية لصباني

Building Metal Products Manufacturing

العنوان / Address

Phone No
Fax No
Mobile No

تليفون
فكس
هاتف متنقل

P.O. Box
Parcel ID

مستودع بريد
599-1167

Email / البريد الإلكتروني
مسودع رقم 12 - مكتب والى امرال الدولة - مجمع دبي للاستثمار الأولى

ملاحظات / Remarks

مكتب إدارة فقط

Print Date
21/02/2023 14:01

تاريخ الطباعة

Receipt No.
14854636

رقم الإيصال



يمكنك الآن تجديد رخصتك التجارية من خلال الرسائل النصية القصيرة أرسل رقم الرخصة إلى 6969 (إم إس إس) لتستلم
على إن الدفع
Now you can renew your trade license by sending a text message (SMS). Send your trade license number to 6969 (Dul Etisalat) to receive payment voucher.

Get FREE access to Zoho One for the first year
احصل على إيمزون مجاناً لمدة سنة الأولى
Zoho onebnt



هذه الوثيقة معتمدة ومصدرة بدون توقيع من دائرة الاقتصاد والتنمية في دبي. إمرأة صفة الوثائق الواردة في الرخصة يرجى مسح رمز الاستجابة السريعة
this is a certified e-document issued without signature by the department of Economy and Tourism. Kindly Scan the QR Code to Verify the certificate



شهادة شهر قيد شركة في السجل التجاري
Commercial Register

رقم القيد
1879605

اسم الشركة
مصنع بانيغ أنفروب سيستمز د.م.م

الشكل القانوني
شركة ذات مسؤولية محدودة - الشخص الواحد (ذ.م.م)

تاريخ الإصدار
04/03/2020

رقم الترخيص
883063

Main Lic. Nr
883063

Register No.
1879605

Company Name
BUILDING ENVELOPE SYSTEMS MANUFACTURER L.L.C

Legal Type
Limited Liability Company - Single Owner(LLC - SO)

Expiry Date
08/03/2024

D&B D-U-N-S
0

Reg. Date
04/03/2020

تاريخ الانتهاء

تفاصيل رأس المال / Capital Details

Nominated
Paid
No. of Shares
Currency

300,000.0000
300,000.0000
300.0000
UAE Dirhams

الاسمي
الدفع
عدد الأسهم
نوع المال

عنوان الرخصة / License Address

مسودع رقم 12 - مكتب والى امرال الدولة - مجمع دبي للاستثمار الأولى

عنوان السجل التجاري / Commerce Address

مكتب مركز رويال دايوود - إحدانية B

نشاط السجل / Register Activities

صناعة الاتعمال المعدنية لصباني

Building Metal Products Manufacturing

Print Date
21/02/2023 14:01

تاريخ الطباعة

Receipt No.
14854636

رقم الإيصال



يمكنك الآن تجديد رخصتك التجارية من خلال الرسائل النصية القصيرة أرسل رقم الرخصة إلى 6969 (إم إس إس) لتستلم
على إن الدفع
Now you can renew your trade license by sending a text message (SMS). Send your trade license number to 6969 (Dul Etisalat) to receive payment voucher.

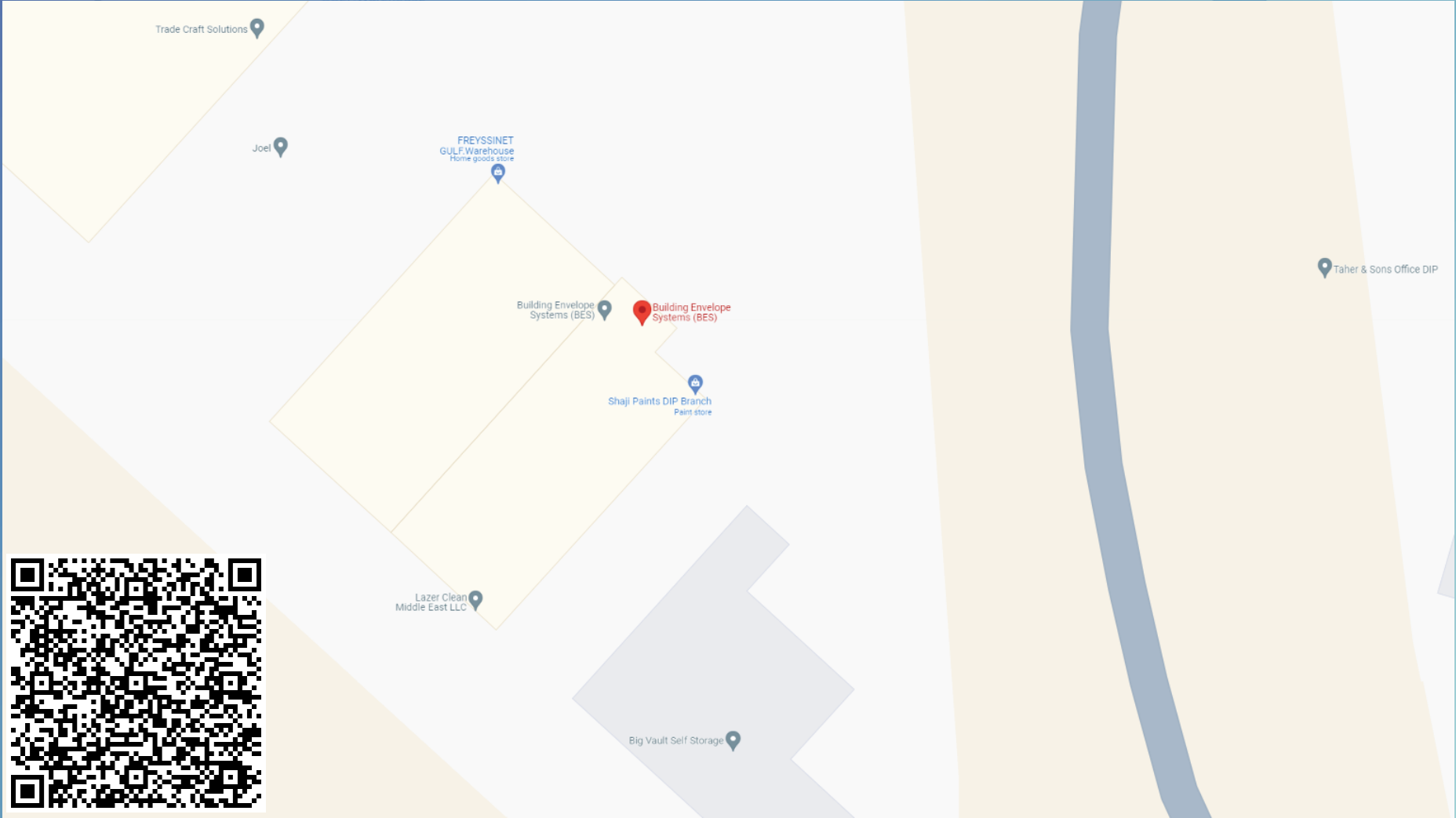
Get FREE access to Zoho One for the first year
احصل على إيمزون مجاناً لمدة سنة الأولى
Zoho onebnt



هذه الوثيقة معتمدة ومصدرة بدون توقيع من دائرة الاقتصاد والتنمية في دبي. إمرأة صفة الوثائق الواردة في الرخصة يرجى مسح رمز الاستجابة السريعة
this is a certified e-document issued without signature by the department of Economy and Tourism. Kindly Scan the QR Code to Verify the certificate

50

Location Map



BIES

BUILDING ENVELOPE SYSTEMS